

Demographic and Income Profile

Morris County, NJ 6
Morris County, NJ (34027)
Geography: County

Prepared by MCEDC

Summary	Census 2010	2017	2022
Population	492,276	505,067	513,252
Households	180,534	184,151	186,652
Families	129,242	131,625	133,337
Average Household Size	2.68	2.70	2.70
Owner Occupied Housing Units	135,316	133,170	134,656
Renter Occupied Housing Units	45,218	50,981	51,996
Median Age	41.2	42.7	43.5
Trends: 2017 - 2022 Annual Rate	Area	State	National
Population	0.32%	0.49%	0.83%
Households	0.27%	0.42%	0.79%
Families	0.26%	0.40%	0.71%
Owner HHs	0.22%	0.32%	0.72%
Median Household Income	1.76%	2.29%	2.12%

Households by Income	2017		2022	
	Number	Percent	Number	Percent
<\$15,000	8,934	4.9%	8,816	4.7%
\$15,000 - \$24,999	9,164	5.0%	8,441	4.5%
\$25,000 - \$34,999	8,487	4.6%	7,738	4.1%
\$35,000 - \$49,999	13,908	7.6%	12,331	6.6%
\$50,000 - \$74,999	24,231	13.2%	20,170	10.8%
\$75,000 - \$99,999	22,111	12.0%	20,784	11.1%
\$100,000 - \$149,999	36,687	19.9%	39,279	21.0%
\$150,000 - \$199,999	22,964	12.5%	26,065	14.0%
\$200,000+	37,665	20.5%	43,028	23.1%
Median Household Income	\$104,857		\$114,413	
Average Household Income	\$144,199		\$161,788	
Per Capita Income	\$53,195		\$59,446	

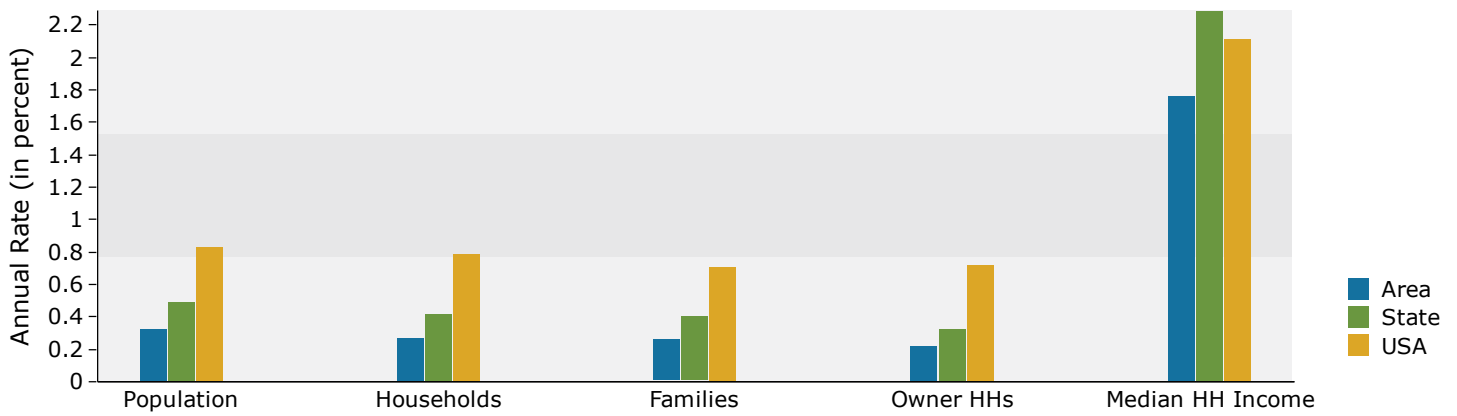
Population by Age	Census 2010		2017		2022	
	Number	Percent	Number	Percent	Number	Percent
0 - 4	27,342	5.6%	24,929	4.9%	25,042	4.9%
5 - 9	33,064	6.7%	30,511	6.0%	28,297	5.5%
10 - 14	35,446	7.2%	35,150	7.0%	32,615	6.4%
15 - 19	32,678	6.6%	32,889	6.5%	32,004	6.2%
20 - 24	23,994	4.9%	26,169	5.2%	24,302	4.7%
25 - 34	51,794	10.5%	54,567	10.8%	57,065	11.1%
35 - 44	72,187	14.7%	63,770	12.6%	67,441	13.1%
45 - 54	85,379	17.3%	79,255	15.7%	72,379	14.1%
55 - 64	62,237	12.6%	72,364	14.3%	75,526	14.7%
65 - 74	35,589	7.2%	47,966	9.5%	54,937	10.7%
75 - 84	22,218	4.5%	24,814	4.9%	30,177	5.9%
85+	10,348	2.1%	12,683	2.5%	13,467	2.6%

Race and Ethnicity	Census 2010		2017		2022	
	Number	Percent	Number	Percent	Number	Percent
White Alone	406,683	82.6%	400,982	79.4%	394,624	76.9%
Black Alone	15,360	3.1%	18,004	3.6%	19,736	3.8%
American Indian Alone	805	0.2%	922	0.2%	1,027	0.2%
Asian Alone	44,069	9.0%	53,537	10.6%	61,185	11.9%
Pacific Islander Alone	106	0.0%	158	0.0%	183	0.0%
Some Other Race Alone	14,910	3.0%	18,376	3.6%	21,296	4.1%
Two or More Races	10,343	2.1%	13,088	2.6%	15,201	3.0%
Hispanic Origin (Any Race)	56,482	11.5%	69,759	13.8%	80,680	15.7%

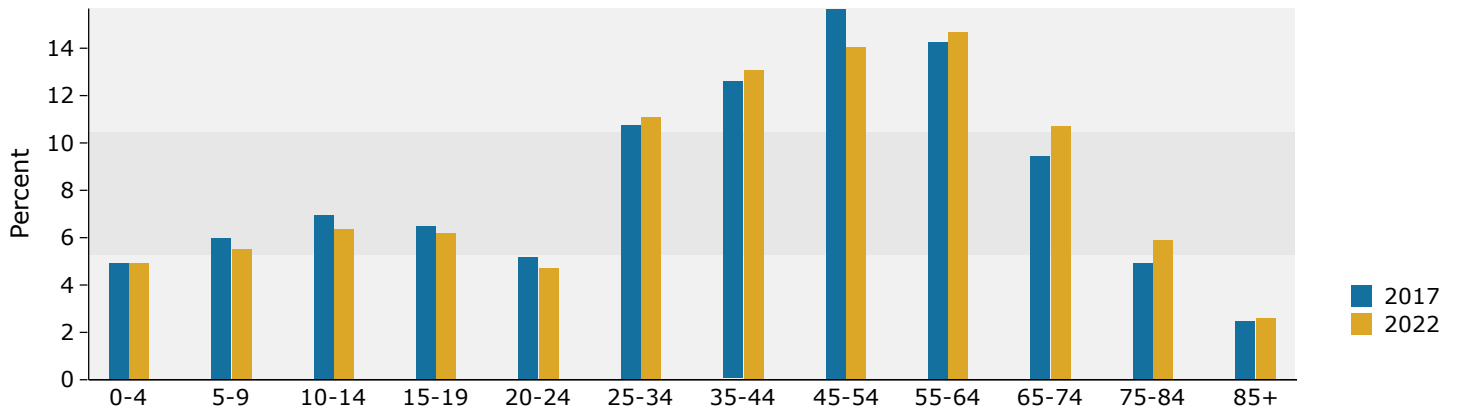
Data Note: Income is expressed in current dollars.

Source: U.S. Census Bureau, Census 2010 Summary File 1. Esri forecasts for 2017 and 2022.

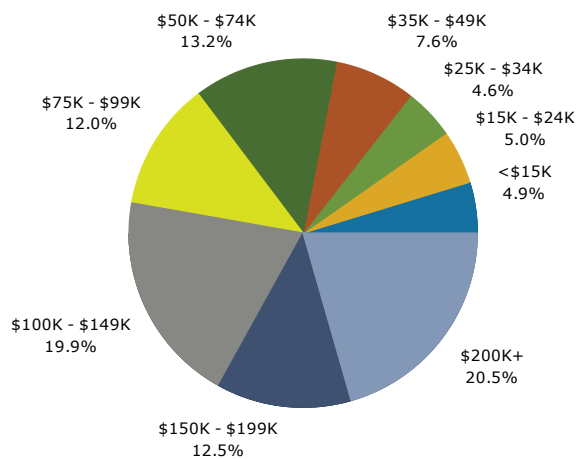
Trends 2017-2022



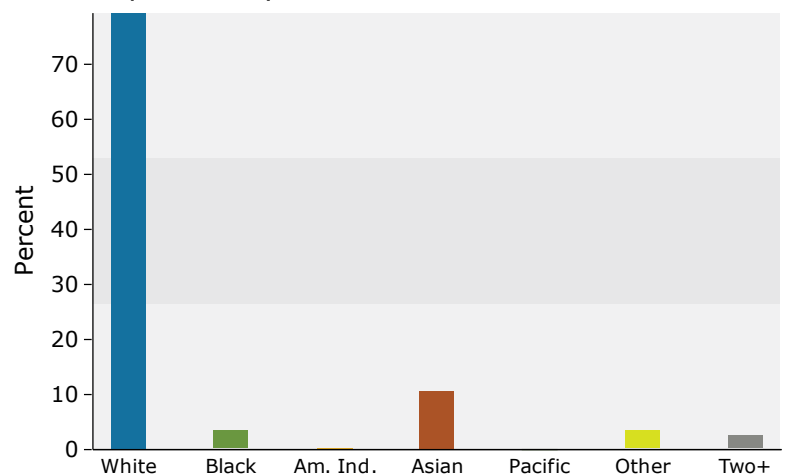
Population by Age



2017 Household Income



2017 Population by Race



2017 Percent Hispanic Origin: 13.8%